

# ACCESSIBILITY GUIDE FOR GOODISON PARK

Everton Football Club Stadium Tours

GOODISON  
TOURS

---

Please inform [Tours@Evertonfc.com](mailto:Tours@Evertonfc.com) or call our Fan Centre on **0151 556 1878** of any additional accessibility requirements you may need to make us aware of.

# WELCOME

## A WARM WELCOME AWAITS ALL VISITORS AT GOODISON PARK.

Our behind-the-scenes tour at Goodison Park is where our expert guides will express the passion and knowledge for the Club and teach you about our proud footballing history. You will have the chance to visit some of our newly-refurbished hospitality lounges and understand what goes on in here during a matchday. You will see the Directors' box before heading into the changing rooms, both home and away. Visitors also have the chance to emerge from the tunnel to the sound of Z-Cars and take a seat in the manager's chair in our home dugout.

## AT A GLANCE



### LEVEL ACCESS

- The main entrance has level access with a lift and a ramp. The ramp is permanent.
- There is Level Access from the main entrance to:
  - Main Reception Desk (not lowered)
  - 2nd Floor Accessible toilet
  - 1st Floor Accessible toilet
  - Everton One Club Store (roads to cross outside of the stadium)
  - Tour Route (except pitchside)



### ACCESS WITH STEPS

- There are steps from the main entrance to:
  - Pitchside and Dugouts



### HEARING

- The fire alarm has flashing lights.
- All staff have disability awareness training. Some staff have British Sign Language training.
- Hearing loop is fitted in the main reception area.



### VISUAL

- Glass doors and full-height windows have contrast markings.
- The walls and the doors have high colour contrast.



### GENERAL

- We have a complimentary ticket policy for personal assistants.
- There is at least 1 public toilet for disabled visitors.
- All staff have disability awareness training.



# GETTING HERE

## GOODISON PARK

Goodison Road  
Liverpool  
L4 4EL

Enter via Goodison Road Main Stand Reception



## TRAVEL BY PUBLIC TRANSPORT

- You can get to Goodison Park - Everton Football Club Stadium Tours by bus and train.
- BUS Based a few miles / 8.4 km from the city centre, Goodison Park is easily accessed by bus - From James Street Station, Bus 21 (Stop JC) - From Queen Square Bus Station, Bus 20 (Stand 8) - Disembark at Ludlow Street Bus Stop, Walton. The bus stop is 0.20 miles / 0.32 km from Goodison Park - Everton Football Club Stadium Tours.
- The nearest train station is Kirkdale. The train station is 0.8 miles / 1.3 km from Goodison Park - Everton Football Club Stadium Tours.
- Kirkdale train station is a 15-min walk from Goodison Park.



## TRAVEL BY TAXI

- You can get a taxi with Alpha Taxis by calling 0151 722 8888. The taxi company has a wheelchair accessible vehicle.
- You can get a taxi with Delta Taxis by calling 0151 922 7373. The taxi company has a wheelchair accessible vehicle.

### TAXI

There are multiple taxi firms that service the city, all are available at a reasonable cost from the city centre.

**Alpha Taxis:** 0151 722 8888

**Delta Taxis:** 0151 922 7373

**Village Taxis:** 0151 427 7909

**Uber & Ola Cabs** also operate in Liverpool

# GETTING HERE



## PARKING

- Parking is available at the stadium and the Club store.
- Everton One store car park, accessed via Langham Street. This is a 5-min walk from Tours entrance (Goodison Road main reception).
- Parking is also available in the main Park End car park, accessible via Goodison Road. Please note this car park may be out of use to tour guests during pre-arranged events, match days and the day before matchdays.
- All car parks are first-come first-serve basis.
- The parking is less than 50 metres from the main entrance.
- Parking is free at both the Park End car park and the Club Store car park.
- There is a drop-off point at the main entrance. The drop-off point has a dropped kerb.
- From the car park to the entrance, there is level access. The path is sloped.
- The route is 1390mm wide, or more.

### Accessible Parking

We have both marked and unmarked accessible parking positions in our Club car park located at the Park End and also marked positions in our Everton One, Club store car park for tour visitors. These car parks are a short walk to the tours entrance (Goodison Road reception). We do offer the option to drop off any guests at the tour entrance before parking up in either car parks if there is any concern regarding the short journey to the tours entrance.

# ARRIVAL



## PATH TO MAIN ENTRANCE

- From the street to the main entrance, there is level access.
- There is a permanent ramp.
- The path is 1390mm wide, or more.
- The path is sloped.



## MAIN ENTRANCE

- The main entrance has level access.
- There is a permanent ramp.
- There is a lift.
- The door is 900mm wide.
- Single door into main entrance that is 90cm in width and is automatic.
- Hearing loop is installed.

## STADIUM TOUR ROUTE

### VISUAL IMPAIRMENT

#### General Information

- We have contrast markings on all glass doors, contrast markings on all full-height windows and high colour contrast between walls and doorframes.

#### Lift to all floors (excluding pitchside)

- One lift. The lift door is 900mm wide.
- The lift is 1700mm wide. The lift is 900mm deep.
- The lift says the floor number at each floor.
- The lift buttons have raised numbers or letters.
- The lift shows the floor number at each floor.



Main Entrance Lift

### MAIN RECEPTION DESK

- From the main entrance to the desk, there is level access.
- There is a permanent ramp.
- The route is 2000mm wide, or more.
- The door is 900mm wide, or more.
- Unfortunately, no lowered counter.



Tour Entrance, Main Reception desk

## STADIUM TOUR ROUTE (CONTINUED)

### HOSPITALITY LOUNGES

- One of the stops on the tour is the '85 lounge and 1878 lounge.
- Doors into the '85 lounge are double doors 1300mm wide.
- The entrance from the '85 lounge to the 1878 lounge has two doorways, one 700mm wide, the second 800mm wide.



Entrance to '85 lounge



Exit of '85 lounge



Entrance to 1878 lounge

### MEDIA LOUNGE

- The media lounge is one level, except for the press conference stage. This has 3 steps up, no ramp available. Handrail is available.
- Accessible toilet available in this area.



Entrance to Media corridor



Entrance to Media room



Steps to the media stage

### DIRECTORS' BOX VIEWING PLATFORM

- From the main entrance to the viewing area, there is level access via a lift.
- From the lift to the viewing area, the route is 900mm wide, or more. The door is 1800mm wide.
- The wheelchair spaces are sheltered. Personal assistants and friends can sit with wheelchair users.

# STADIUM TOUR ROUTE (CONTINUED)

## TOILETS - 2<sup>ND</sup> FLOOR ACCESSIBLE TOILET

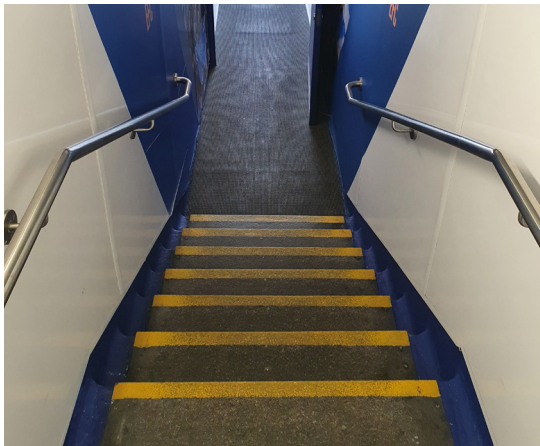
- There is a public toilet for disabled visitors.
- You need a RADAR key to open the public toilet.
- From the main entrance to the public toilet, there is level access. There is a lift.
- From the lift to the public toilet, the route is 900mm wide, or more.
- The toilet door is 870mm wide.
- The direction of transfer onto the toilet is to the front only.
- There is 1000mm in front of the toilet. The toilet seat is 410mm high. The toilets have handrails.

## CHANGING ROOMS

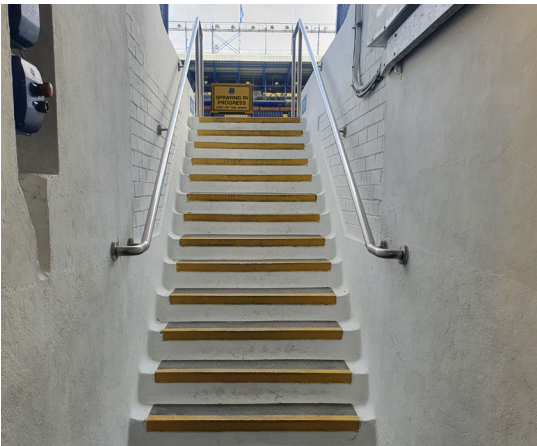
- Changing rooms are all on one level.
- Doors are 700mm or more around the First-Team area.
- Please be aware it is a tight angle to manoeuvre into the away changing rooms.

## TUNNEL, PITCHSIDE, DUGOUTS

- Doors are 700mm or wider around the tunnel area and heading to pitchside.
- The tour then continues down the corridor towards the players' tunnel.\*
- This section of the corridor has a steep slope.
- The slope has handrails both sides.
- At the bottom of the slope is the entrance to the players' tunnel.
- The tunnel has 7 steps down and then 13 steps up towards pitchside.
- There is no lift available at this area to access pitchside.
- The steps are at a height of 16cm and have handrails on both sides. At this part of the tour, the 'Z-Cars' theme tune is played.
- Guests can be taken pitch-side via an alternative route which will result in one of our guides/ stewards taking the party outside the stadium to a pitchside entrance that is accessible from Park End stand. However, you may be restricted to visit the dug outs as there is a unlevel ramp that is not advised guests use. But all guests will have a pitchside view.



Tunnel steps down to pitchside (7steps)



Tunnel steps up to pitchside (13steps)

# STADIUM TOUR ROUTE (CONTINUED)

## EVERTON ONE CLUB STORE

- From the main entrance to the shop, there is level access. There is a permanent ramp. The route is 1300mm wide, or more. The door is 1300mm wide.
- The store does occasionally change the layout through the season, resulting in different measurements and routes around the shop.

## CUSTOMER CARE SUPPORT

### EMERGENCY EVACUATION PROCEDURES

- We have emergency evacuation procedures for disabled visitors.
- The fire alarm has flashing lights.

### CUSTOMER CARE SUPPORT

- All staff have disability awareness training.
- Some staff have BSL training.

Guide last updated: August 2022

# GOODISON TOURS

